

Fort Atkinson High School ACT Results

Class of 2015

Report to the Board of Education

General ACT Information

NATIONAL

- Curriculum-Based Achievement Exam
- Measures Academic Skills
 - Taught in High Schools
 - Deemed Important for College Success
- Scores 1 to 36
- Administered in all 50 states
- Accepted by All Major Colleges and Universities
- Cost: \$39.50 without writing; \$56.50 with writing



[What's on the Test?]

English 75 Questions 45 Minutes	Usage/Mechanics Editing Text for grammar and mechanics Rhetorical Skills Revision of Text for style, word choice, organization Does not include Spelling, Vocabulary or Rote Grammar Skills
Math 60 Questions 60 Minutes Multiple Choice Calculator Allowed	Pre / Elem. Algebra Algebra / Cord-Geometry Plane Geometry / Trigonometry



[What's on the Test?]

Reading 40 Questions 35 Minutes	SS & Science (Nonfiction) Art & Literature (Fiction) Measures ability to derive meaning from texts by referring to what is explicitly stated and reasoning to determine implicit meanings.
Science 40 Questions 35 Minutes	Data Representation Research Summaries Conflicting Viewpoints



Fort Atkinson High School Profile of Class of 2015

- **Total Test takers** **123 (49%)**
- **55 male (45%)**
- **68 female (55%)**



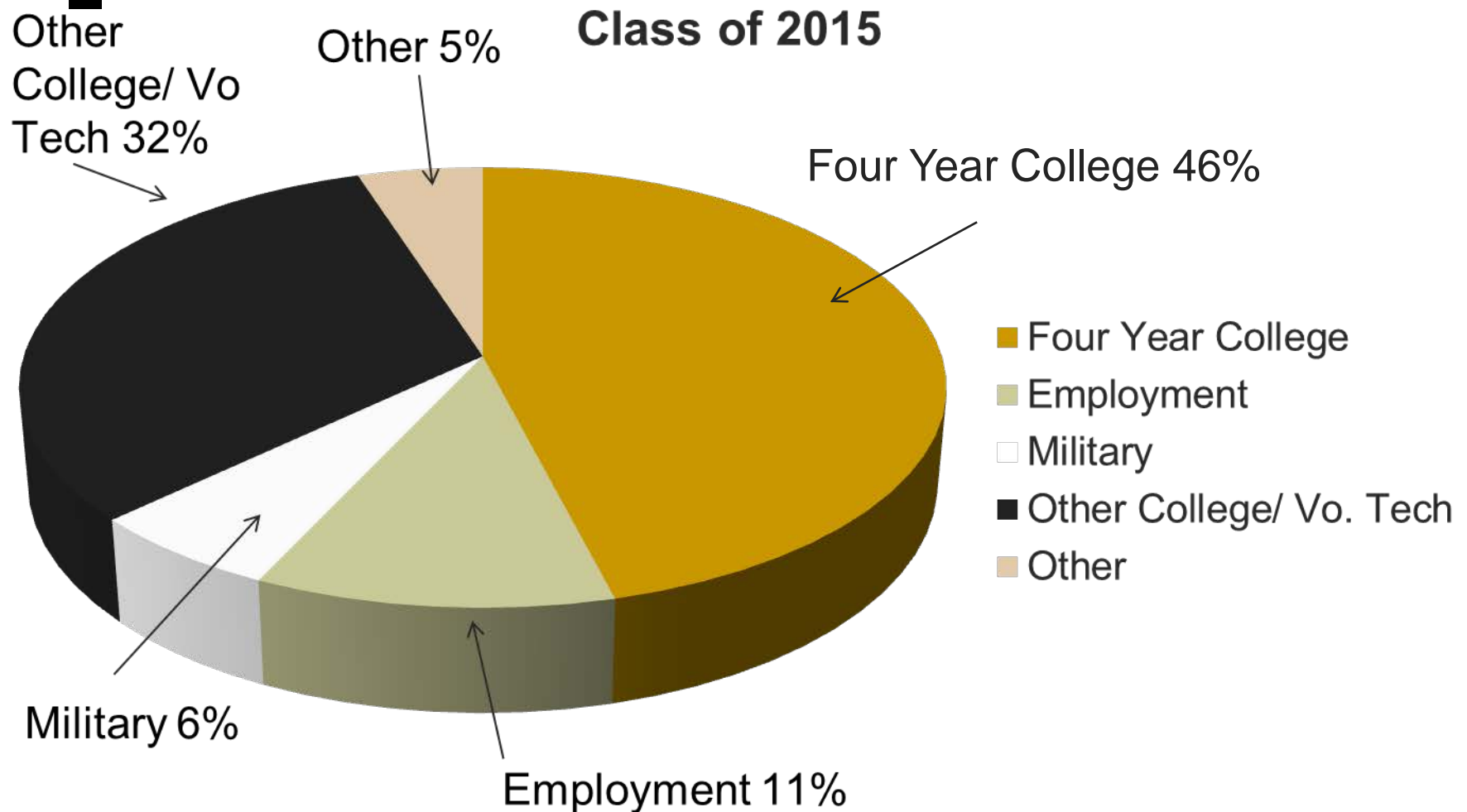


Participation Rates

Class of	Test Takers	% of Class
2005	128 / 212	60%
2006	138 / 206	67%
2007	116 / 198	59%
2008	134 / 264	51%
2009	114 / 233	49%
2010	133 / 239	56%
2011	137 / 253	54%
2012	119 / 230	52%
2013	117 / 262	44.7%
2014	142 / 247	56.7%
2015	123/250	49.2%



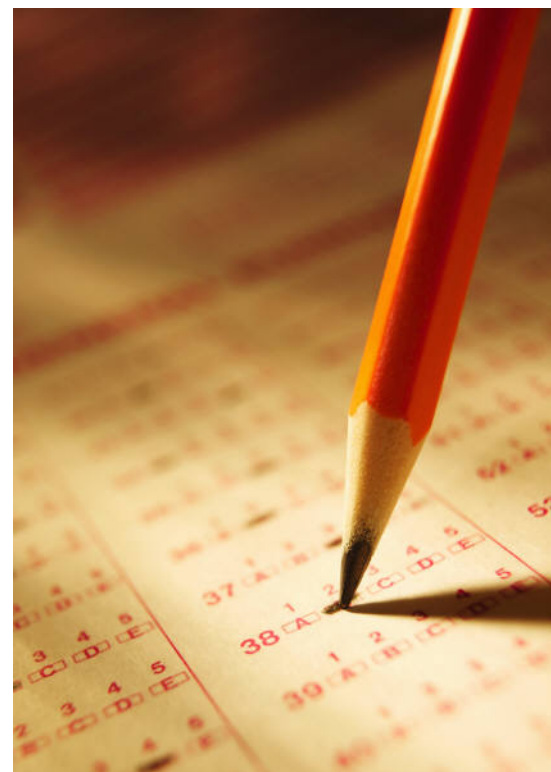
Class of 2015 Post Graduate Intentions





[ACT Composite Score Class of 2015

- **Local** **22.9**
- **State** **22.2**
- **National** **21.0**





Longitudinal Composite Scores

<u>Class</u>	<u>Local</u>	<u>State</u>	<u>National</u>
2006	21.4	22.2	21.1
2007	22.8	22.3	21.2
2008	23.1	22.3	21.1
2009	23.1	22.3	21.1
2010	23.5	22.1	21.0
2011	22.4	22.2	21.1
2012	22.7	22.1	21.1
2013	22.2	22.1	20.9
2014	23.2	22.2	21.0
2015	22.9	22.2	21.0



Average Score by Subject

Total Group - 2015

	Local	State	Nation
English	22.4	21.6	20.4
Math	22.5	22.0	20.8
Reading	23.1	22.5	21.4
Science	23.0	22.3	20.9



ENGLISH: Sub Score Comparisons

Class of ...	LOCAL	Difference Local & State	STATE	NATION
2005	21.5	SAME	21.5	20.4
2006	20.7	-0.8	21.5	20.6
2007	22.1	+0.5	21.6	20.7
2008	22.3	+0.6	21.7	20.6
2009	22.4	+0.7	21.7	20.6
2010	23.0	+1.5	21.5	20.5
2011	21.6	SAME	21.6	20.6
2012	22.4	+0.9	21.5	20.5
2013	21.4	-0.1	21.5	20.2
2014	22.3	+0.7	21.6	20.3
2015	22.4	+0.8	21.6	20.4

MATH: Sub Score Comparisons

Class of ...	LOCAL	Difference Local & State	STATE	NATION
2005	21.6	-0.4	22.0	20.7
2006	20.7	-1.3	22.0	20.8
2007	21.4	-0.8	22.2	21.0
2008	22.8	+0.5	22.3	21.0
2009	22.6	+0.4	22.2	21.0
2010	23.1	+1.1	22.0	21.0
2011	22.4	+0.3	22.1	21.1
2012	21.9	-0.1	22.0	21.1
2013	21.5	-0.5	22.0	20.9
2014	22.8	+0.8	22.0	20.9
2015	22.5	+0.5	22.0	20.8

READING: Sub Score Comparisons

Class of ...	LOCAL	Difference Local & State	STATE	NATION
2005	22.3	-0.1	22.4	21.3
2006	21.8	-0.6	22.4	21.4
2007	23.8	+1.4	22.4	21.5
2008	23.4	+0.8	22.6	21.4
2009	23.4	+0.8	22.6	21.4
2010	24.0	+1.7	22.3	21.3
2011	22.4	+0.2	22.2	21.3
2012	23.4	+1.3	22.1	21.3
2013	23.2	+0.9	22.3	21.1
2014	23.3	+0.9	22.4	21.3
2015	23.1	+0.6	22.5	21.4

SCIENCE: Sub Score Comparison

Class of ...	LOCAL	Difference Local & State	STATE	NATION
2005	22.6	+0.3	22.3	20.9
2006	22.0	-0.2	22.2	20.9
2007	23.1	+0.7	22.4	21.0
2008	23.1	+0.8	22.3	20.8
2009	23.3	+1.0	22.3	20.9
2010	23.5	+1.3	22.2	20.9
2011	22.7	+0.4	22.3	20.9
2012	22.6	+0.5	22.1	20.9
2013	22.4	+0.2	22.2	20.7
2014	23.4	+1.1	22.3	20.8
2015	23.0	+0.7	22.3	20.9



ACT Benchmark Scores

College Course	ACT Test	Benchmark Score
English Composition	English	18
College Algebra	Mathematics	22
Social Sciences	Reading	22
College Biology	Science	23



Percent of 2015 ACT-Tested Students Meeting Benchmark Scores

	FAHS	State	Nation
English Composition	80	74	64
College Algebra	55	52	42
Social Science	57	53	46
College Biology	53	49	38
All 4 Areas	36	35	28



Percent of Students Meeting Benchmark Score

ALL FOUR AREAS

Grad Year “Class of...”	LOCAL	STATE
2006	28	28
2007	33	29
2008	34	30
2009	37	30
2010	38	31
2011	30	32
2012	33	31
2013	37	33
2014	42	34
2015	36	35



[Optional Writing Section]

- Since 2005, students have had the option to participate – Not mandatory for 2015
- Tests ability to construct an effective essay responding to a prompt
- **59 out of our 123** took the writing test (**48%**)
- Average FAHS student score was **7.3** out of possible 12
- State average 7.1 out of 12
- Scores reported separately, not part of composite score



English & Writing Scores

Class of 2015

	FAHS	State
English	24.7	22.6
Essay	7.3	7.1
English/ Writing	23.3	21.6

COMPARABLES

■ Like 10 Schools...#4!

1. Sauk Prairie: 23.7
2. Onalaska: 23.2
3. Baraboo: 23.2
4. Fort Atkinson: 22.9
5. Holmen: 22.7
6. Portage: 22.6
7. Burlington: 22.2
8. Elkhorn: 22.1
9. New London: 21.6
10. Waupun: 20.7



[COMPARABLES]

■ Badger Conference:

1. Edgewood:

2. Waunakee: 25.1

3. Mount Horeb: 24.3

4. Oregon: 23.8

5. Sauk Prairie: 23.7

6. Stoughton: 23.6

7. Baraboo: 23.2

8. DeForest: 23.0

9. Fort Atkinson: 22.9

10. Monroe: 22.7

11. Portage: 22.6

12. Reedsburg: 21.6

13. Milton: 22.1

14. Monona Grove: 22.8



[**Top Schools**

Receiving ACT info from Fort Students

UW Whitewater	37 Students
UW Madison	31 Students
UW La Crosse	21 Students
UW Oshkosh	19 Students
UW Platteville	14 Students
UW Stevens Point	13 Students
Madison College	12 students
UW Milwaukee	11 Students
U of Minnesota	9 Students
UW Eau Claire	7 Students

]

[QUESTIONS?



Fort Atkinson High School

ACT Aspire Results

2014-2015

Report to the Board of Education

General ACT/Aspire Information NATIONAL

A summative assessment that measures what students have learned in the areas of: English, Reading, Math, Science, and Writing.

- Predicts how a student will perform on both The ACT and ACT WorkKeys when they reach 11th grade.
- Students who need academic interventions or challenges can be identified earlier in their high school careers.
- ACT Aspire Early High School is an online assessment.

ACT Aspire

- 2014-2015 –First Year that the test was offered and taken by students at FAHS
- Freshmen Class of 2018- Two test events
October 2014 and May 2015
- Sophomores Class of 2017: May 2015
Location
 - Large Group-Gymnasium
 - IMC-Students in need of modifications
 - Make-up tests as needed through Pupil Services

What's on the Test?

Reading and Science...

Reading

60 Minutes

Key Ideas and Details

Craft and Structure

Integration of Knowledge and Ideas

Progress and Test Complexity

Science

35 Minutes

- **Data Representation**
- **Research Summaries**
- **Conflicting Viewpoints**

[English, Writing...]

English

40 minutes

- **Production of Writing**
- **Knowledge of Language**
- **Conventions of Standard English**

Writing

30 Minutes

- **Ideas and analysis**
- **Development and Support**
- **Organization**
- **Language Use Conventions**

[And Math]

Math

60 Minutes

- **Grade level progress**
- **Justification and Explanation**
- **Algebra, Geometry, Functions**
- **Modeling, Measurement, and Data**
- **Statistics and Probability**

[Scoring]

- Tests Aligned to Common Core State Standards
- ACT Aspire results are reported on a 3-digit score scale.
- “ACT Readiness Benchmark” for English, reading, writing, math and science provides additional perspectives on student readiness.
- Determines if students are on track for readiness at the appropriate grade/subject level

Scoring: Range and Benchmarks

Grade	English 40 min.	Writing 30 min.	Reading 60 min.	Math 65 min	Science 55 min
9th	400-456 426	408-448 428	400-442 425	400-460 428	400-449 430
10th	400-456 428	408-448 428	400-442 428	400-460 432	400-449 432

Freshmen Class of 2018

Spring Testing- May 5th, 2015

Students Tested	Subject	FAHS Composite	Predicted ACT score	ACT Readiness
221	English	429	19.7	Ready
221	Science	428	22.1	Close
220	Writing	427	6.7	Close
219	Math	426	20.9	Close
220	Reading	422	20.8	Close

Predicted ACT Composite Score- 21.1

Class of 2018 Readiness and Gender Comparison

Subject	Ready	Close	In Need of Support
Science	98 (44%) Female-49 Male-49	59 (27%) Female-32 Male-27	64 (29%) Female-24 Male-40
Math	92 (42%) Female- 40 Male-52	60 (27%) Female-33 Male-27	67 (31%) Female-32 Male-35

2018 Comparison Continued

Subject	Ready	Close	In Need of Support
English	146 (66%) Female-80 Male-66	44 (20%) Female-18 Male-26	31 (14%) Female-7 Male-24
Writing	97 (44%) Female-60 Male-37	89 (41%) Female-36 Male-53	34 (15%) Female-9 Male-25
Reading	90 (41%) Female-49 Male-41	57 (26%) Female-31 Male-26	73 (33%) Female-25 Male-48

Sophomore Class of 2017

Spring Testing- May 5th,2015

Students Tested	Subject	FAHS Comp.	Predicted ACT score	ACT
206	English	430	19.3	Ready
207	Writing	428	6.8	Ready
206	Science	428	21.7	Close
206	Reading	423	20.6	Close
207	Math	426	19.8	Close

Predicted ACT Composite Score- 20.6

Class of 2017 Readiness and Gender Comparison

Subject	Ready	Close	In Need of Support
Science	83 (40%) Female-41 Male-42	41 (20%) Female-24 Male-17	82 (40%) Female-34 Male-48
Math	48 (23%) Female-20 Male-28	64 (31%) Female-36 M-28	95 (46%) Female-44 Male- 51

2017 Comparison Continued

Subject	Ready	Close	In Need of Support
English	124 (60%) Female- 68 Male-56	46 (22%) Female- 20 Male-26	36 (17%) Female-11 Male- 25
Writing	122 (59%) Female-76 Male- 46	59 (29%) Female-19 Male-40	26 (13%) Female- 5 Male- 21
Reading	74 (36%) Female- 43 Male- 31	40 (19%) Female- 21 Male-19	92 (45%) Female- 35 Male- 57

[How Do We Compare?]

- Currently there is no data available that allows us to compare our data with other regional, conference or state schools.
- There are no composite data from the October testing session for Freshmen

Nationally- According to ACT/Aspire...

Class of 2017

Subject	Percentile
Writing	66 th
Science	57 th
Math	51 st
Reading	47 th
English	47 th

Class of 2018

Subject	Percentile
Science	67 th
Writing	65 th
Math	61 st
Reading	57 th
English	54 th

[Next]

Next test for both groups will be in the Spring of 2016

- Class of 2017- ACT/ACT WorkKeys in March
- Class of 2018-ACT/Aspire May 2016
- Class of 2019-ACT/Aspire May 2016

[Take Aways...]

2014-2015: A Baseline Year

- Identifies areas of strength and weakness
- Identifies populations that may need intervention and support tied in to our FAHS early warning system.
- Identifies that female Students are achieving at a rate higher than their male counterparts

[Questions?]
